

16" Tall Model "MD" Conveyor



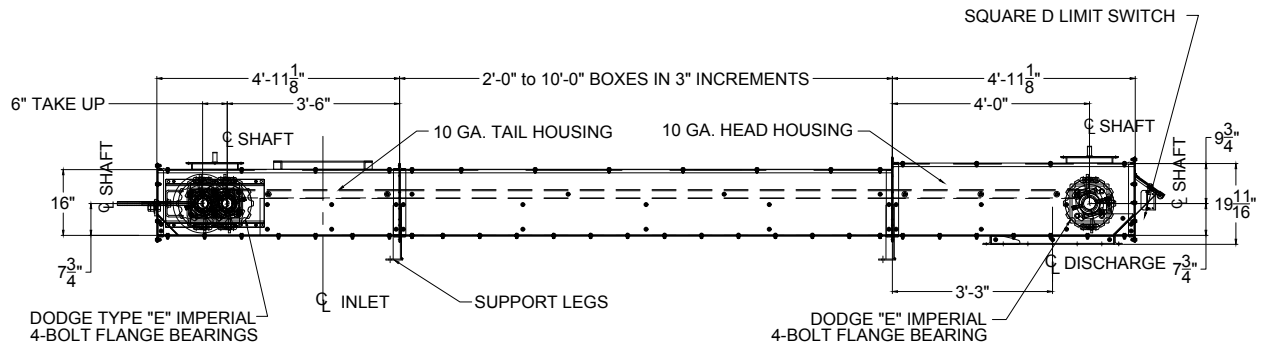
"Where Customer Service is always FIRST"

1850 N Ohio St.
Ph: 316-201-3158

Wichita, Ks 67214
www.bulkconveyorsinc.us

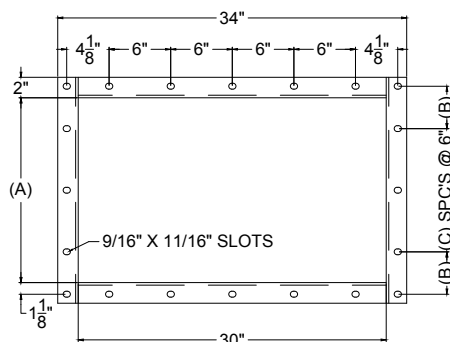
*Speed varies with degree of incline, materials being conveyed, service factors, and other conditions. BCI engineers work with you and your requirements to furnish precise recommendations when you consult us for your conveying needs.

16" TALL CONVEYOR CAPACITY					
CONVEYOR WIDTH	UNITS	FEET PER MINUTE (SPEED)			
		1	50	100	150
9"	BPH	24	1222	2443	3665
	CFH	30.4	1520	3040	4560
	CMH	0.86	43	86	129
12"	BPH	33	1627	3255	4882
	CFH	40.5	2025	4050	6075
	CMH	1.15	57	115	172
15"	BPH	41	2033	4067	6100
	CFH	50.6	2530	5060	7590
	CMH	1.43	72	143	215
18"	BPH	49	2443	4886	7330
	CFH	60.8	3040	6080	9120
	CMH	1.72	86	172	258
24"	BPH	65	3255	6510	9765
	CFH	81	4050	8100	12150
	CMH	2.29	115	229	344
30"	BPH	81	4068	8138	12206
	CFH	101	5062	10125	15187
	CMH	2.85	142	285	427

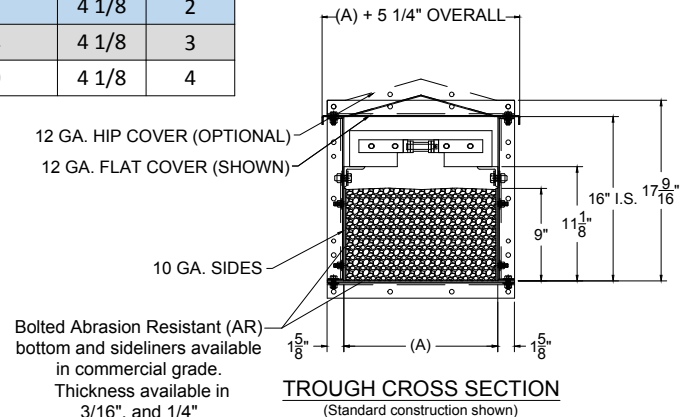


TYPICAL ELEVATION VIEW

A(WIDTH)	B	C
9	5 5/8	0
12	4 1/8	1
15	5 5/8	1
18	4 1/8	2
24	4 1/8	3
30	4 1/8	4



HEAD DISCHARGE HOLE PATTERN
(Discharges shipped with a mating flange by request)



22" Tall Model "MD" Conveyor



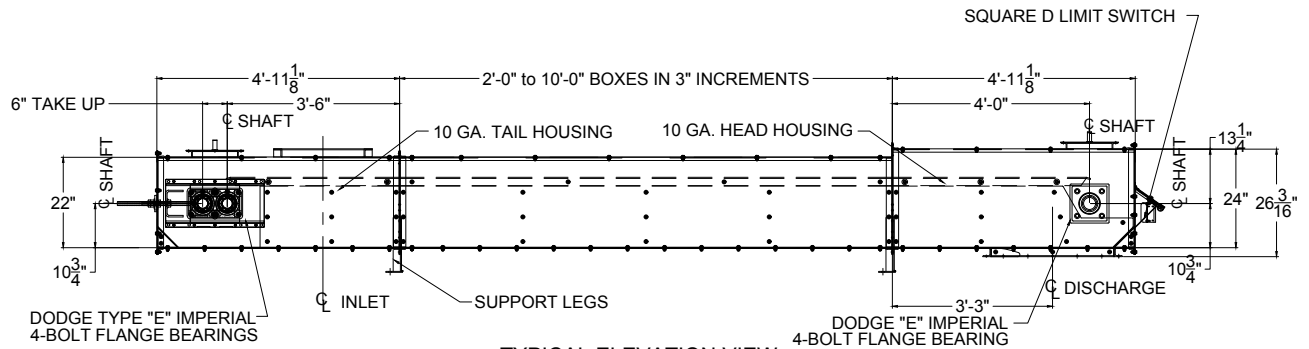
"Where Customer Service is always FIRST"

1850 N Ohio St.
Ph: 316-201-3158

Wichita, Ks 67214
www.bulkconveyorsinc.us

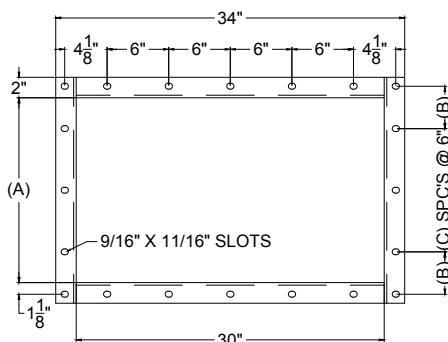
*Speed varies with degree of incline, materials being conveyed, service factors, and other conditions. BCI engineers work with you and your requirements to furnish precise recommendations when you consult us for your conveying needs.

22" TALL CONVEYOR CAPACITY					
CONVEYOR WIDTH	UNITS	FEET PER MINUTE (SPEED)			
		1	50	100	150
12"	BPH	54	2712	5425	8137
	CFH	67.5	3375	6750	10125
	CMH	1.91	96	191	287
15"	BPH	68	3391	6781	10172
	CFH	84.375	4219	8438	12656
	CMH	2.39	119	239	358
18"	BPH	81	4069	8137	12206
	CFH	101.25	5063	10125	15188
	CMH	2.87	143	287	430
24"	BPH	108	5425	10850	16275
	CFH	135	6750	13500	20250
	CMH	3.82	191	382	573
30"	BPH	136	6781	13562	20343
	CFH	168.75	8438	16875	25313
	CMH	4.78	239	478	717
36"	BPH	163	8137	16275	24412
	CFH	202.5	10125	20250	30375
	CMH	5.73	287	573	860

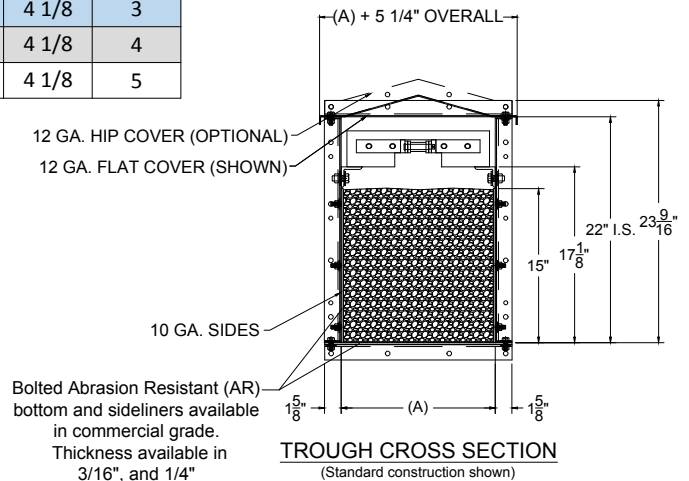


TYPICAL ELEVATION VIEW

A(WIDTH)	B	C
12	4 1/8	1
15	5 5/8	1
18	4 1/8	2
24	4 1/8	3
30	4 1/8	4
36	4 1/8	5



HEAD DISCHARGE HOLE PATTERN
(Discharges shipped with a mating flange by request)



TROUGH CROSS SECTION
(Standard construction shown)